



Te Rūnanga o Ngāti Kuia Charitable Trust



Annual General Meeting 2013

Contents

<i>Previous Minutes</i>	3
<i>From the Chairperson.....</i>	7
<i>Whakapakiri Whānau o Ngāti Kuia</i>	8
<i>Whakapapa Unit Report</i>	10
<i>Mandate Reports</i>	14
<i>Ngāti Kuia Holding Company Ltd</i>	25
<i>Te Hoiere Holding Company Ltd</i>	25
 <i>Appendix One: Financial Report</i>	
<i>Appendix Two: 2014 Annual Plan</i>	



Previous Minutes

Te Rūnanga o Ngāti Kuia Charitable Trust Annual General Meeting

10.30am Saturday 15 September 2012

Chairperson: Waihaere Mason

Minute Taker: Lea-Jane Hemi

Karakia/Mihi: Waihaere Mason

Apologies: See attachment

Motion: Peter Meihana/Sharyn Smith

That the apologies are accepted

Carried

Previous Minutes

Motion: Wayne Hemi/Nicola Hemi

2011 Minutes Accepted

Carried

Chairpersons Report

Waihaere read his report

- MDC are holding up the resource consent procedure for the Wharekai, although the marae has been a reserve for over 20 years, they have no record of this. They are also disputing the movement of people from the current dining room to the new Wharekai will not increase the numbers of people using Te Hora
- A description of the new PSGE entities was given and assurance that the Board are aware of tax implications and they are confident the new structure is the best fit.

Motion: Waihaere Mason/Peter Meihana

Report is accepted

Carried

Mandate Reports

- These reports are taken as read as they are the same as the recently published Maranga Mai

Motion Waihaere Mason/Teone Smith

Mandate The Mandate Reports are accepted

Carried

Treaty Settlement

- Our first workshop with OTS has happened
- Contrary to assurance from OTS staff that the deed to sign was final, the Minister of Finance may now not sign the deed to amend until they are sure there will not be a cost to them should Wakatū Incorporation win their court case. The Board are currently awaiting a reply from the minister

Motion: Barry Mason/Matt Baker

That the Treaty Settlement Report is accepted

Carried

Financial Report

Motion Barry Mason/ Matt Baker

That the 2011/2012 accounts are accepted with thanks

Accepted

Motion Barry Mason/Teone Smith

That the 2012 draft accounts are accepted

Carried

- We are making good interest rates on current investments and these will roll over into the PSGE
- We have increased our level of equity
- 2011 assets are at market rates
- The 2012 accounts are unaudited at this stage. The audited accounts will be presented at the next hui
- Quota share value will come through from the fisheries
- Assets will be re-valued prior to the movement to the PSGE

Motion: Nicola Hemi/Barry Mason

That Richards Woodhouse are confirmed as auditors for the 2012/2013 financial year

Carried

Motion: Barry Mason/Tom Wilson

That the Trustee Fees be increased to \$400 and the Board also takes into account a reduced payment for half and quarter days

Carried

Companies Report

- Report read by Nicola
- Code of conduct ie, Slave Labour
- The way forward is to provide employment for our Iwi, set up pataka systems and Joint Ventures
- Woodbourne purchase and other Crown properties are noted in the Companies Report
- Ngāti Kuia currently own a total of 500 ton of fish, although some of this cannot be leased out as the species limit is too small

Motion Barry Mason/Wayne Hemi

That the Companies report is accepted

Carried

Annual Plan

- Report on previous year by Wayne Hemi
- Annual Plan is very similar to previous years
- Consultation with Iwi will happen with the PSGE Strategic Plan

Motion Barry Mason/Teone Smith

That the Annual plan and report is accepted

Carried

Hui Closed at 12.35pm

APOLOGIES FOR THE 2012 AGM

Peter Hemi	Kaveapa Palapuy
Kassanna Hemi	Josephine Eragher
Vinny Smith	Noeline Hemi
Troy Smith	Sano Paratene
Jason Smith	
Lana Charters	
Moya Cameron	
Vanda Pope	
Mona Wilson	
Jim Wilson	
Roma Taylor	
Daria Selman	
Darius Wilson	
Michael Wilson	
Geoffrey Wilson	
Peter Wilson	
Caroline Linton	
Linda Mead	

Accepted Peter Mason
 Second Sharyn Smith

Te Rūnanga o Ngāti Kuia Charitable Trust

Annual General Meeting.

Saturday 15 September 2012

Attendance List

NAME		ADDRESS	SIGNED
Tecora Smith	1		
Peter Meihana	2		
Sharyn Smith	3	P.O. Box 114, Hawke Bay	
Geoffrey	4		
Wendy Hemi	5		
Nicki Hemi	6		
Elaine Wilson	7		
WARREN BRET WILSON	8		
Geoffrey Wilson	9		
Billy Wilson	10		
Geoffrey Hemi	11	10 Ell Street, Greycliff, St. Helens	
William Hemi - Whiro	12		
CHESTER HEMI	13		
Wahane Mason	14		
Barry Maitland	15		
Kawana Hemi	16		
Turia Hemi	17		
Nora Hemi	18		
Michael Dawson			
Roger Hemi Byers			
Elaine Hemi			
Mark Baxter	19		
Elaine Wilson			
Louis Pinker - Meihana			
Ronald Pinker - Meihana			

From the Chairperson

Tēnā koutou nga Whānau o Ngāti Kuia

This may well be the last Chairperson's Report associated with Te Rūnanga o Ngāti Kuia Charitable Trust.

Over time we have received excellent support from Whānau, Mandates, and Management, the latter bearing the load in maintaining our organisation. Times have been difficult due to delays in reaching final Settlement that would enable us to move into Post Settlement status. However, our assets and investments are safe, and are being made ready for transfer to the future governance entities. In this respect, forming a tax effective environment is the key but there are challenges to achieving this status. Maintaining a holding position was the sensible decision but as we progress staffing matters will need to be addressed to meet the new order.

In terms of investments, forming any purchase agreements on Woodbourne Airbase and Ministry of Education properties are on hold until we can get sensible decisions on values from Ministry of Defence and Ministry of Education. However, there is no requirement from these parties to part with any of these assets until Settlement becomes final, sometime in 2014. We are working on these properties in tandem with Ngāti Apa and Rangitane. Aquaculture and Quota remain an important part of our investment portfolio.

Our Mandates are continually involved in debating the sensibility of increased fish farms in Te Hoiere, and the outstanding putea related to Quota and new water space both yet to be distributed. These, and significant sites under duress, in Te Tau Ihu, at times causes debate over manamoana and manawhenua. It is our stance that we can make comment, if we so wish, on any matter that comes within our stated boundaries, regardless of what is in *Te Whakatau*.

A recent development has been discussion around the management of "Wai". It is the most important kaupapa of the times. This was central to the establishment of an Iwi Leaders Forum for Te Waipounamu. The eight Te Tau Ihu Iwi and Ngai Tahu have formed a liaison where agenda items will be matters of importance. We believe that such a forum will be a good political influence at local and national levels.

As we move into the future we must adapt to an environment that requires careful management and decision making. Adopting the corporate "look" has its dangers when we are obviously not in that league- not yet anyway! It will take time. I ask for patience in this respect.

I wish to thank everyone for their continued loyalty to Ngāti Kuia.

No reira, rau rangātira ma, e koro ma, e kuia ma. e nga whānau katoa. Nga mihi nui ki a koutou nga mihi nui rangimarie.

Whatu ngarongaroa he tangata, toitu he whenua,
(Man disappears but the land remains)

Naku noa, na

Waihaere Mason

Whakapakiri Whānau o Ngāti Kuia

Marlborough Office

A warm thanks to all of you that have visited the Blenheim office over the last seven years and my apologies for the cramped space, stairs, shared kitchen, messy office and often empty.

As some of you are aware we have been looking for another office space which is more whānau friendly and suitable for the activities that we as an Iwi need to grow.

Projects and Events

These events are promoted on the Ngāti Kuia face book page, panui, notice boards and the kumara vine.

Titirangi Mahinga kai Wananga was held in April this year. The weather was terrible leading up to the date and although many decided to withdraw, we still had 20 people come along and enjoy the wild isolated places that were home to our tupuna.

Due to the weather conditions we decided not to attempt landing on the island but agreed on mahinga kai ika instead (plus our diving mate Kane for koura and kina). Once out of Titirangi we headed around Tawera Point and into Anakoha Bay for to look at sites of significance, past Te Puru through Te Paruparu Straight and over to Whakatahuri.

Listening to some of the old stories of battles, war, occupation and colonialism was great, I especially liked the one about the beer keg that was broken open trying to get it to over the Whakatahuri Cut.

The pingao that was planted last year was attacked by the farmers stock and only one was found to have survived.

The Hunting and Fishing Competition was held on 01, 02 and 03 March. This was the first such event of this type we have held. It provided those that came along an opportunity to get out in the boat, on the beach and up the hill. There were five categories in all and a bouncy castle, tamariki entertainment and kai were provided on the final weigh in day. This event will be advertised for the same time next year for Whānau to participate.

Pakohe/whakapapa wananga is proposed for mid-November and anyone who wants to attend can secure your place by expressing an interest by contacting Raymond in Blenheim or Billy in Nelson.

Hopai sports day on 04 January 2014. If there is enough support, we will be there. This event has been a long tradition for Ngāti Kuia Whānau and I clearly remember travelling over and watching the Uncles win the chopping. I would be keen to develop a project plan and facilitate some attendance there to support our Whānau in some of the events.

There are sack races, three legged races, wood chopping, tug of war, gumboot throw and the hotly contested Hopai "He Man race", also open to women and teams. There is a small shop selling sweets, cold drinks and ice creams and under the tree is a bar, with beer and wine.

We are committed to changing the way we have celebrated our Ngāti Kuia day, this will come in the form of celebrating our new settlement in Labour Weekend 2014. We will focus it at Te Hora (assuming the whare kai is completed) over three days and utilise the sports field next to Te Hora Marae. Send in your thoughts for a fun filled 3 day program

If you have any specific wananga topics, please do not hesitate to let me know.

Ngāti Kuia Representation

During the last year, I have been able to represent Ngāti Kuia at the following groups:

- *Marlborough District Council Environment Committee Iwi Rep*

I continue to represent Iwi on the MDC Environment Committee. It is a role that I particularly like as it keeps me up to date with most of the issue that affect the regions environment. This has been increased with the earthquakes that have been on-going for a couple of months. Damage to homes, industry and landscapes are being assessed. Old buildings are being surveyed and the office shakes violently when earthquakes occur.

- *Marlborough Sounds Advisory Group Iwi Rep*

Quarterly meetings are held around the rohe to meet the locals and to listen to what the general concerns are. Nominated representatives from most of the Sounds areas attend. Many issues are raised, discussed and if needed are taken back to Council to try and mitigate concerns. Issues include 1080 drops, poaching, wild pines, marine farms, roading, mis-use of DOC tracks and water quality to name a few.

- *New Zealand Planning Institute, Māori Special Interest Group*

This is now called Te Papa Pounamu and as part of the working group we have developed a Terms of Reference to join and advocate for Māori aspirations in all areas of Planning. A national conference was held in Hamilton which I was to pass the mauri of the 2012 annual conference held in Blenheim. This particular group is at the forefront of all development in Aotearoa.

- *Māori National Network, EPA*

As the EPA takes on the extended roles of the previous Government entity ERMA, Iwi need to be aware of the Governments obligations to consult. Many issues are discussed at these Hui that could have a major impact on Māori from seabed mining, EEZ extension to importing sprays such as Methyl Bromide. Different issues affect Iwi in different way, it is a great forum for Resource Managers to understand what is important or to gain support for a particular issue.

This is now called Te Herenga and again was part of the working group that developed a terms of reference for Iwi to participate.

- *Marlborough Sounds Integrated Management Plan*

This has developed into a working group that has worked together to achieve the skeleton of a plan that integrates all users and aspirations into the future.

Whakapapa Unit Report

Following is the proposed Iwi Registration Plan for 2013 -2014.

Other key activities of the whakapapa Komiti the past year include:

- Ngāti Kuia korero introduced into local schools
- Taonga Tuturu Protocol Planning
- Ngāti Kuitanga Cultural Unit Development
- In conjunction with the Whakapakiri Whanau Manager(Raymond Smith), inclusion of Ngāti Kuia whakapapa, tikanga and waiata in a number of Wananga Projects

TRONK Iwi Registration 2013-14 Annual Plan:

Our strategic aims	Our Purpose:	This work stream is led by TRONK	Who we work with:	What we have to work with:
<ul style="list-style-type: none"> • Increase membership participation by 5% per annum 	Membership Registration Service; <ul style="list-style-type: none"> • To maintain Registration Membership Roll • To increase registered membership • To ensure validity of membership 	<ul style="list-style-type: none"> • Trust Board • Registrar • Whakapapa Komiti 	<ul style="list-style-type: none"> • Iwi Membership 	<ul style="list-style-type: none"> • Registration and other relevant Policies • Registration Systems • Registrar and Whakapapa Komiti • Contracted Specialists

What we plan to do, how we will do it, and how you will know 2013 to 14

This year ... we intend to contribute to increasing Iwi membership participation by 5% by:

1. To maintain existing Membership Roll,
2. To register and validate new member applications
3. To ensure membership contact information is up to date and to make efforts to contact those who have not updated their contact information
4. To develop the Registration System to provide more functions, such as allowing members to access and update their information online
5. To provide resources to support registrations and about Ngāti Kuia History and Whakapapa
6. To support Iwi events, hui, wananga with information and services
7. To Report on the above activities to the TRONK Trust Board, and Iwi Members through the Iwi Communications



These actions will meet compliance for MIO/AIO and Trust Deed requirements to maintain a role of beneficiaries and increase registration of Iwi membership.

What we are trying to achieve (Strategy and Plan)	How will we know (Measure / Indicator)	How we do it (Key Planned Activities)	What will we need (Key People, Processes & Resources)
1. To maintain existing Membership Roll	5% Increase of Registered Membership 5% Reduction of registered members who are un-contactable Compliance with Strategy, Plan and Policies	<ul style="list-style-type: none"> Registrar to maintain Registration Systems Registrar to review and Report on <ul style="list-style-type: none"> Registration Policy Registration system performance Membership Roll 	Registration Policy Registration Systems Registration Form Registrar IT Specialist Internal Audit Registration Monitoring Report
2. To register new member applications	5% Increase of Registered Membership Compliance with Strategy, Plan and Policies	<ul style="list-style-type: none"> Receiving and registering applications Maintaining existing Membership Rolls Internal Audit Registration Monitoring Report 	Registration Policy Registration Systems Registration Form Registrar Internal Audit Registration Monitoring Report
3. To validate membership	5% Increase of Registered Membership Compliance with Strategy, Plan and Policies	<ul style="list-style-type: none"> Register to referring new applications and disputes to Whakapapa Komiti for recommendations on validity of membership Internal Audit Registration Monitoring Report 	Registration Policy Registration Systems Registration Form Registrar Whakapapa Komiti Members Whakapapa Komiti Hui Internal Audit Registration Monitoring Report
4. To ensure membership contact information is up to date	5% Reduction of registered members who are un-contactable	<ul style="list-style-type: none"> TRONK Advertise list of members names who we do not have current contact details for on Website Registrar to include on Iwi Communications (Information on Website and Panui) Update Registration Form Internal Audit Report on numbers of members un-contactable 	Registration Policy Registration Systems Registration Form Website Registrar Internal Audit Registration Monitoring Report
5. To identify members who's contact	5% Reduction of	<ul style="list-style-type: none"> Registrar identify and provide un- 	Registration Policy

What we are trying to achieve (Strategy and Plan)	How will we know (Measure / Indicator)	How we do it (Key Planned Activities)	What will we need (Key People, Processes & Resources)
information is no longer up to date	registered members who are un-contactable	contactable list for publication <ul style="list-style-type: none"> Registrar maintain and update un-contactable list Internal Audit Report on numbers of members un-contactable 	Registration Systems Internal Audit Registration Monitoring Report Website Registrar

6. To develop new Registration database functionality	5% Increase of Registered Membership 5% Reduction of registered members who are un-contactable Compliance with Strategy, Plan and Policies Project meets requirements, within budget and timeframes.	<ul style="list-style-type: none"> TRONK contract IT Special Project to explore cost and functionality of providing Registration database; including Membership Information update online Report on project progress 	Registration Policy Registration Systems Registration Form Registrar IT Specialist Internal Audit Registration Monitoring Report
7. To develop Registration Related Information and Resources	5% Increase of Registered Membership 5% Reduction of registered members who are un-contactable Compliance with Strategy, Plan and Policies Project's meets requirements, within budget and timeframes.	Special Projects: Registrar and Whakapapa Komiti Members develop and produce; <ul style="list-style-type: none"> Whakapapa Wananga resources Registration Booklet Tupuna and Nga Toro Profiles History and Tupuna History Sheets Attend and provide information at Wananga and Hui	Registration Policy Registration Systems Registration Form Registrar Whakapapa Committee Internal Audit Registration Monitoring Report Hui Wananga Contracted Specialists

Annual Calendar of Key Events and Activities

Item	Apr	July	October	January	February
KPI Reports	Report / Review	Report	Report	Internal Audit	Report
Whakapapa Komiti Hui	Annual Review Wananga	Membership Review Hui	Membership Review Hui	Membership Review Hui	Planning Wananga
Registration Database Project	IT Project				
Registration Information Project	Resource Project				

Whakapapa Komiti members are:

Billy Wilson

Kim Hippolite

Mark Moses

Raymond Smith

Peter Meihana

Mandate Reports

Customary Fisheries – Raymond Smith

Customary Fishing permits have been steady and we are now inputting data into the new system of recording our catch data.

The paua stocks in Te Taihu are at crisis level and have been mismanaged by the ministry and the commercial sector, from 267 tonnes a year down to 160 tonnes this year, with a possible reduction of 33% and a harvest season, clearly show what state the commercial harvest of paua is in.

Previous levies on quota owners were not enough to maintain a substantial reseeding program and the efforts to date are not reflecting any increase. This has created an issue for customary projects around mataitai applications being opposed by the Paua Industry Council and a perception that Iwi customary authorisations are to blame for the decreasing paua abundance.

Customary Fisheries has been holding up the commercial catch by not taking the full allocation per year. It is estimated that customary may be only using 1 tonne per Iwi, leaving 32 tonnes in the water to procreate.

Customary Fisheries has been dominated by efforts to participate in the South Island Customary Fishing Regulations and the review of them. Issues of exclusivity have continued to be raised with no evidence or support from any Iwi or the Treaty of Waitangi Process.

Ngāti Kuia has been in discussion around customary interest on Rangitoto on the grounds that it is not an exclusive rohe of Ngāti Koata and that Ngāti Kuia has a right to participate in the mataitai development.

Customary fishing is unaffected by seasonal fishing rules, but we keep an eye on where risk and pressure adversely affects important stocks.

I spent the day and night on Foxton Beach with Russell Packer and others. It was great to see Whānau utilising their skills to catch Kahawai and Patiki. It was also an eye opener to see the direct impacts on kaimoana beds from the pollution that comes from primary industries that discharge into the Manawatu awa.

The Rawaru/Blue Cod season in the Marlborough Sounds Area (MSA) closes on end of August and opens again on Thursday 20 December. It is really important for the future of blue cod in the Sounds that recreational fishers know the rules and apply them.

Tupa/Scallop season is underway with some very good catches in Totaranui and Te Hoiere.

Inanga/Whitebait . Thursday 15 August marked the official start of another whitebait fishing season for areas other than the West Coast of the South Island. The West Coast whitebait season starts on 01 September. DOC staff will be patrolling fishing sites to check that people are abiding by the Whitebait Fishing Regulations.

Long Fin Eels have now been classified as endangered. Commercial eeling has decimated the population while habitat destruction continues at an alarming rate.

Kaimoana Kaitiaki for Ngāti Kuia are; Reuben Manihera, Bill Hemi and Raymond Smith. At this stage we can only assist you getting a permit, divers/fishers and boats are still needed.

I continue to advocate that Ngāti Kuia needs a customary fishing boat. This will provide the ability to maintain a pataka as well as teach our own people boating and fishing skills.

We are still waiting for the South Island customary Fisheries regulations to be implemented to get Teone Smith, Lee Mason, Wayne Hemi and John Hart on board. It would be great to get more people interested

“Give a man a fish and he will feed himself for a day, teach a man to fish and he will feed himself and his family forever”

Ministry of Primary Industries (Old Ministry of Fisheries) - Raymond Smith

This Government agency has combined the responsibilities for Aquaculture, Fisheries, Forestry, and Agriculture business. This agency has the responsibility to increase potential income from all sectors.

There is an opportunity for Iwi, Whānau and Hapu to look for support if you have land or land interest. This could include forestry, aquaculture, agribusiness ie manuka honey/oil, farming and anything that could gain or add value from existing lands.

One of the important components to development is strong governance of land that is able to manage/commit for a certain time period. This could provide the opportunity to update Land Trustees and input into the Māori economy.

Te Papa Atawhai/DoC – Raymond Smith

The DOC operational review is coming to a close with the new structure expected to “go live” on Monday 2 September. Roy Grose has been confirmed in his new role as Conservation Services Manager in Picton and Phil Bradfield has been appointed in South Marlborough.

The new structure sees two main areas of Conservation Services – responsible for operational work and delivering quality conservation services work in the field and Conservation Partnerships – the business group is responsible for growing conservation through new and existing partnerships.

It will take several months to settle in and to start operating effectively in a new departmental structure. They are hopeful the challenges ahead will not impact greatly on the very positive relationships with the Ngāti Kuia

- *Whangamoa/Kokorua*

This area has been managed by DoC in conjunction with Iwi for many years; the dune system that naturally occurs has been under attack by rabbits. The pingao and spinnaflex grasses that hold the dunes together have been fenced, midden sites other archaeological sites have also been protected. It was great to have the support of Tom Wilson on the site visits and to hear the many stories from the good ol bad ol days.

- *Te Matau/Abel Tasman National Park*

Work is on-going in terms of recognising Ngāti Kuia along the coastal area of the Tasman National Park. Ngāti Kuia has had discussions with Iwi and DoC. We have had input into recognition of Ngāti Kuia at Te Matau/Seperation Pt, this will come in the form of a pakohe matau and an information panel.

- *Ship Cove Poison Operation*

An aerial possum control programme in late June staged off a moored barge resulted in a good coverage of Ship Cove and Cannibal Cove catchments. We managed to make the best of a very narrow weather window to cover over 1500ha of bush and indications are the pre feed control work was successful at knocking back the possum population. Ngāti Kuia maintain a policy on opposing 1080 aerial drops

- *Mt Stanley Pest Control*

The main focus of the Tennyson Inlet, Nydia and Mt Stanley pest control operation is on rats and rising possum numbers. When they reach a trigger point we will be attempting to carry out broad scale pest control to protect mainly birds and snails from predation.

- *Pakeka/Maude Island*

Chris Birmingham and Nio Mana have been reconfirmed to stay on at Maud Island. Mark Nelson has been appointed to a role in Westport and two staff, Bill Cash and Norm Gourdie retired. Pam McDonald has picked up a national role in Health and Safety. All up There has been a loss of four positions to the restructure which is about 18% of our permanent staff work force.

- *Cowshed Bay and Kenepuru Head*

All those that have been down to Kenepuru Head over the last six months would have seen the improvements be made on the DoC reserves.

The upgrade of Cowshed Bay and Kenepuru Head campgrounds has been largely completed with just the landscaping work to be finished before the summer season.

Both camp sites now have new cooking shelters, toilets with an upgraded sewerage system and a shower. The buildings are looking flash and once the landscaping is completed these two campgrounds will be amongst our best facilities and are a great asset for the Sounds and Marlborough region, a great place to meet (or stay) on the way to Hopai Sports Day.



- *Oruawairua/Bluemine Island*

The rowi chick produced by a pair of Okarito brown kiwi on Oruawairua Island is extremely significant as there is only about 80 breeding pair of rowi in the country and maintaining their genetic diversity is vital. The chick has already been transferred to Mana Island in the hope that it will breed with other rowi there. It will be genetically tested to establish its sex and it will be named following a public competition by Kiwis for Kiwi.

Oruawairua is also proving itself to be a very important island for the recovery of Tieke, critically endangered orange fronted parakeets with trans located birds getting on with the business of breeding in a relatively pest free habitat.

- *Moawhitu, D'Urville Island*

A freshwater fish and eel (tuna) survey has been undertaken at Moawhitu following an earlier survey carried out over 5 years ago.

Lake water quality was measured with very little improvement from the original survey which is surprising considering the number of cattle that were defecating in the lake when the property was purchased.

However, lack of stock grazing the swamp and habitat for eels has improved the health and abundance of these unique and culturally important fish due to better cover and damming up the drains. We will be looking at improving eel passage from the drains to the lake.

The rarer Long Finned eel is the most common eel at Moawhitu which makes the site very important as made aware by recent publicity about the plight of our endemic eels.

- *Takapourewa (Stephen's Island)*

New resident rangers and West Coast imports to the Sounds team, Andre de Graaf and Polly Hall, will be going out to Stephen's Island on 2 September. They replace Frank Higgott and Sue Caldwell who have been doing an excellent job on the island for the last 18 months with their young whānau.

- *Conservation Week*

Conservation week this year will run from 7 to 15 September. The theme is "What's your whānau doing". This theme aims to raise awareness of simple ways to get involved in conservation, and to encourage families (and other social groups) to participate.

The call to action is 'Register your pledge'. New Zealanders will be encouraged to 'make a pledge' for conservation by going to the Conservation Week website and choosing an activity that they'll commit to do during the week. These activities can be done in any region, and range from little things like going for a walk in the ngahere (forest), to big things like joining a local volunteer group.

Tui Nature Reserve – Raymond Smith

Tui Nature reserve has made significant progress in reducing predators and managing endangered species. The predator proof fence is nearly completed with the help of volunteers and DoC.

The Trust appreciated the donation from Ngāti Kuia to purchase Ka Mate traps, these are designed and produced in Nelson.

During the King Salmon marine farm application, all sponsorship funding was revoked due to the environmental position Tui Nature Reserve held against them.

There has been a membership drive to assist development of the nature reserve and if anyone wants to support or just keep updated, you can visit the website www.tuinaturereserve.co.nz.

Te Hoiere Pekapeka/Bats – Raymond Smith

The colony at Pelorus Bridge Scenic Reserve has been very quiet over the winter, as expected. The focus is on studying the long-tailed bat population at Pelorus Bridge.

Although bats have been found throughout the Rai and Pelorus catchments and now Rangitoto, the main concentration was at Pelorus Bridge where it all started.

It is intended to catch a sample of bats in this area and attach miniature radio-transmitters to them. Following release, the radio-tagged bats will be tracked to their daytime colonial roosts. Once colonial roost areas have been found, population sizes will be determined by video surveillance of roost departures.

The overall health and productivity of the population will be assessed using individual details of all bats handled. Although long-tailed bats usually range over wide areas their roosting areas are relatively small areas of forest, where they roost in cavities in old trees. These roosting areas are crucial to the continued survival of long-tailed bat populations. Predator control in these roosting areas is likely to be the most effective method for helping the bats. But first the roosts need to be found.

At the start of November with warmer nights the bats will be foraging outside the forest. There should be large numbers foraging high above the street-lamps at each end of the Pelorus River road bridge. A calm, dry and warm night is required for listening to the bats echolocation calls as they fly past foraging for food.

Resource Management – Raymond Smith

This portfolio is trying to manage a range of resource management issues. As our rohe spans three regions and councils, which manage land based affects as well as marine farm consents. It is quite complex but the development of a Resource Management Unit should go some way to streamlining our participation.

The Unit will be made up of the following people; Christine Hemi, Billy Wilson, Raymond Smith and Lewis Wilson.

King Salmon applied to the EPA for nine marine farms in the Marlborough Sounds (one of 90 hectares in Port Gore) on behalf of Ngāti Kuia I opposed the farms in Te Hoiere.

Finally the EPA granted consents to create four farms. Two in Te Hoiere, one in Port Gore and one in Queen Charlotte Sounds. This was appealed on points of law by the Environmental Defence Society (EDS) at the High Court, we are still awaiting outcome.

The latest Marlborough District Council Environment Committee report from the salmon farms have confirmed that all existing operating salmon farms are non-compliant to the consents that they are able to maintain their business. Ngāti Kuia is providing two representatives to participate in monitoring on the tangata whenua panel for Te Hoiere.

Two recent marine farm applications in Anakoha Bay have been processed, and had hearings. Due to a lack of submitters and attendees at the hearings, both have been granted.

This is a wakeup call to people who may have issues with types of commercial development in the sounds. Anakoha holds the most land holdings for Ngāti Kuia Whānau and is an area identified by

whānau as a high priority for cultural development ie marae, baches and land development. The three local council websites hold all the information required to access notified application details

18 months ago a cultural reserve on Rangitoto issue was raised at Marlborough District Council. A request to remove cultural reserve status and have the reserve gifted to Ngāti Koata in fee simple title was proposed, without any consultation with any other Iwi.

Ngāti Kuia feels that this did not take into consideration what Ngāti Kuia and any other Iwi may expect through council process. A hui was held at the Ngāti Koata office to clarify our associations to Rangitoto and their association to Te Hoiere.

The Regional Policy Statement is nearly completed and drafts have been sent to all the Iwi boards for ratification, this part of “the Plan” has specific issues relating to Iwi.

Non consented river works have been highlighted as a problem and I am working on an application that may have adverse effects by destroying eel habitat and discharging sediment into Te Hoiere.

Te Waka a Maui Iwi Leaders Forum – Waihaere Mason

The eight Te Tau Ihu Iwi and Ngai Tahu have agreed to form a South island Forum with the intent of cooperating on issues of common interest and similar beliefs.

Ngāti Kuia will be expected to host Hui in the future. Each Iwi will be responsible for funding in house expenses, for respective Hui and maintaining services to the Forum. Attendees shall be Chairperson and/or Vice Chair and/or Support persons for any special take.

Take discussed of importance has been on “Wai” and developing relationships with respective Councils in light of the proposed Iwi Advisory Council formation.

Te Hora Marae

Bookings have been average during the past year. We have held a range of hui from Te Wananga O Aotearoa to Health providers and currently a group of Nga Puhi Forestry Workers. The Marae continues to be utilised by Whanau for family reunions, birthdays and a wedding.

During the past year both the water pump and the septic tank pump had to be upgraded. The water pump is has also been relocated. These pumps are now sufficient to cope with the new Wharekai and increase in use of the Marae.

The Komiti have been working with Waihaere Mason to design the kitchen in the new Wharekai. So as to give access to the new Wharekai a road has had to be built around the side of the hill as part of the Resource Consent application. (Access roading to the wharekai it had to be 50 metres from the main road)

Due to increases in costs, the komiti are working on a new pricing structure for bookings which we will put into place once finalised.

Upcoming bookings are Whanau from Australia on holiday, weekend noho for a te reo class and another family reunion at Christmas.

Once the Wharekai development starts, it is likely the Marae will close for bookings (except tangi) due to health a safety concerns. We will advise whānau once the commencement date has been advised.

Wharekai Project – Waihaere Mason

Due to various delays we are unable to meet the current closing August 29 date for Lotteries and Heritage Funding.

I have recommended that we complete our Application and await the next funding round in February 2014 but carry out preliminary work in the meantime such as access roadworks, waterworks, foundations and Covered Way using our own putea, the amount contingent on the ratio between Lotteries and Ngāti Kuia putea.

While this report is in the next reporting year I think it important enough to include it now.

Whakatū Marae Komiti – Waihaere Mason

The Marae continues to service the needs of Iwi in Whakatū both culturally, and in the delivery of Health programmes which are dependent on securing contracts from Funders. In the main this is Nelson Marlborough District Health Board.

Some key activities have been:

Iwi agreement on forming an Asset Company to protect the Marae proper from any possible loss, has been reached by the six associated Manawhenua Iwi. The Trust Structure is now:

Whakatū Whanau Ora Trust - Social Services Contracts. Members (Six Manawhenua Iwi, Maata Waka, Nelson City Council).

Whakatū Marae Trust – Management of Marae. Members (Six Manawhenua Iwi) this in effect, removes Maata Waka and Council from voting on this Trust.

Iwi appointments of Land Trustees, to replace those no longer members, have been made. The Trustees are; Waihaere Mason, Jon McGregor, Jane duFeu, Moetu Stephens, Nohorua Kotua, Rangi Kohe.

The largest Health Contract is worth \$380k through the NMDHB. Examples of delivery include Community Nurse, Health Promotion, and Palliative Care. However, because of the down turn in funding availability due to the health system overall by Government, Iwi have been asked to support the Marae in meeting general maintenance costs of the Marae.

Kotahitanga – Waihaere Mason

Kotahitanga involves Whakatū me Mohua Iwi who have an MOU with Nelson City Council. We deal with general business of the council. G Mullens is the Iwi liaison person, a Council appointment, there to serve as a conduit to improve communication on all matters.

The Forum has jointly shared in the planning and execution of activities such of the Rugby World Cup and the Waharoa at ANZAC Park. The inner city Walkway along the waterway is current and Iwi have been able to have a Waka landing site included.

RIF – Waihaere Mason

Regional Intersectional Forum (RIF) comprises Manawhenua and Mataawaka with an MOU with most of the Government agencies.

They present reports on their policies and procedures and are able to explain Government attitudes to these. Iwi are able to respond as required with the key point being able to improve health and wellbeing of Māori. As an example of Iwi input I was a member of a subcommittee delegated the task of developing policy around appointment and retention of Māori staff in respective agencies work forces.

Education – Waihaere Mason

Resource Teachers of Learning and Behaviour Management Komiti o Whakatū.

This Komiti oversees the delivery of special needs teaching programmes across Whakatū me Mohua. We have approved various policies for the service to function efficiently.

While Māori form around 9% of the population Māori clients of the service comprise up to 40%. There are pockets of immigrant groups emerging across the rohe. Most are of Asian origin. While minor at the moment there is increasing demand on the service from this quarter.

A Polynesian Support group has been formed to advise and support the Service.

New Space Aquaculture Settlement – Sharyn Smith

New Space Settlement Process:

- Ministerial Plan to be started by December 2012
- National work streams :
- National Projection and allocation Regime
- Value Difference in Regimes
- Review Clause
- Developing Regional and Allocation Agreements
- Negotiations: Settlement negotiations to occur between Iwi and the Crown with assistance from TOKM.
- Iwi preference for Settlement: TOKM to work with Iwi to provide information so that Iwi are able to make an informed decision about their new space settlement preferences.
- Indicative time-frame: August 2013 – April 2014.

Legislation requires regional agreements for new space between Northland, Waikato East, Tasman and Marlborough regions by 01 October 2013. This timeframe will not be met so MPI are seeking an extension.

The national Iwi steering group have agreed to write a letter of support seeking this extension, but have noted their disappointment that more has not been done to date by the Ministry for primary Industries to progress the new space settlement. This briefing is due to go to the minister this week.

National Forecast Work Streams

The project is to deliver an agreed forecast of new aquaculture space for regions of NZ to assist with identifying the Crown's new space obligations under the Māori Commercial Aquaculture Claims Settlement Act 2004.

The technical working papers have been developed by the MPI Aquaculture Unit and are focusing on

- Growth production scenarios and the pros and cons
- Regional productivity Estimates
- Principles for the allocation of space in key regions.

The national Iwi steering group will review and provide advice on the technical working papers in September.

Value Difference Between Regimes

- Previously titled the valuation methodology, this work will explore the value differential between obtaining resource consent under the old and new regime.
- TOKM will carry out this work stream as both Iwi and TOKM sees this work as essential.
- The engaging of the right skills personal to assist with this delivery of this work stream is in progress.

Review Clause

- The new space settlement offer will be based on a national projection for aquaculture out 20 years. Even with the best information there is no certainty what the future of aquaculture will look like.
- Due to this uncertainty there will need to be a process that reviews the situation and considers whether the settlement that was agreed to was too generous or whether it was insufficient.

A number of issues will affect the new space settlement; the application for new space, extensions to existing farms and the on-going process of NZ King Salmon.

For Iwi we need to look at “what our future aquaculture development aspirations as an Iwi are”

What our short terms and medium term goals for aquaculture are?

Key to negotiations is the need for water space; we need this delivered to Iwi unencumbered, with resource consent to farm.

A settlement mix of unencumbered space and cash will assist Iwi to achieve our aquaculture aspirations.

NMIT Kaunihera Iwi Māori – Kim Hippolite

Tēnā koutou e whānau whānui o Ngāti Kuia

As the Ngāti Kuia representative of the NMIT Kaunihera Iwi Māori it is my pleasure to inform you all about the position and why it is important for us to be a part of this group.

NMIT are the largest tertiary provider in the Top of the South Island. Many of the Te Taihira Ngāti Kuia whānau who have sort further education as adults have used NMIT to increase their knowledge and career opportunities. In the past our people have mainly sort Marine, Te Reo, Health and Business.

The Kaunihera Iwi Māori is made up of representatives from all eight Te Taihira Iwi and the two Mātaawaka groups Nelson/Tasman and Marlborough.

We were originally formed to be consultants/advisors to the NMIT Chief Executive Tony Gray but now have a more functioning role implementing Māori strategic direction for Māori tertiary education in our region along with the Director of Māori Education Doc (Takuta) Ferris a descendant of the Ngāti Kuia McGregor/Sciastia whānau and haes from Porangahau in the Ngāti Kahungunu rohe.

The group meets 3-4 times per year and have worked towards making NMIT a more Māori friendly place by increasing signage with English and Māori writing around all campuses, having pōwhiri and greeting ceremonies installed at NMIT as normal practice and making sure that The Treaty of Waitangi is adhered to in delivery to most programmes.

Until recently NMIT offered only Te Reo Māori as a programme that suits our peoples cultural needs and we are looking to increase the Te Reo programmes from an NZQA level 1-4 to 5-6 in 2014 (keep your eyes peeled for this as it will be the highest NZQA Te Reo programme ever delivered if it is accepted).

Next year we intend to have a JV with Te Wānanga o Aotearoa's Certificate in Māori Art as well as a JV with Te Wānanga o Raukawa's Poupou Kāranga & Poupou Whaikōrero programmes.

Brook Waimarama Sanctuary – Christine Hemi

The Brook Waimarama Sanctuary Trust has just launched the 'Get Behind the Fence' campaign to raise funds for the pest proof fence.

There are a variety of options to participate including groups and individuals buying a fence post. Prices range from \$100 to \$5,000.00. The \$100 ones will have the name of the donor inscribed on them and be situated at the back of the sanctuary with the \$5,000.00 ones being right at the entrance.

The Rūnanga has donated five fence posts. Individuals wanting to donate can contact the Sanctuary on 03 546 2422 email info@brooksanctuary.org.nz

Nelson Museum – Christine Hemi

The Isel House Research Facility has been closed for some months due to earthquake refurbishing but will open soon.

The flood damage at the storage facility in Whakatū industrial Park has been cleaned up with no loss of items as they are all stored in racks above the ground by 2 feet. The main problem was getting rid of the silt before the moisture got into things.

The trust also received their LOTC funding which will allow them to keep on the 2 teachers for School visits.



Ngāti Kuia Holding Company Ltd

Te Hoiere Holding Company Ltd

2013 Annual Report

Tēnā koutou e te whānau

The 2012 -2013 year has been a year of patiently waiting for the settlement process to proceed.

During this time the Companies have designed a Statement of Investment Policy and Objects (SIPO) that will manage the settlement funds under the Post Settlement Governance Entity (PSGE) structure both during the pre-settlement period and after settlement has been enacted.

The Board of Directors developed the policy and objectives that would support the transition into the new Entities while ensuring that the Companies SIPO was in line with the Company Kaupapa principals.

- Whakapapa: Commercial endeavor has always been central to the identity of Ngāti Kuia, with our traditions pertaining to trade and commercialism.
- Rangātiratanga – contemporary commercialism is a vehicle for regenerating the social, cultural, environmental, political and economic dimensions of Ngāti Kuia. Our commercial pursuits should both be consistent with our kawa and tikanga as well as contribute to the expression of our inherent Rangātiratanga.
- Whenua- our ancestral landscape is fundamental to our identity as a people. Commercial ventures should contribute to strengthening the visibility of relationship between people and place.
- Kaitiakitanga: the health of the landscape is inextricably connected to the health of the people; commercial ventures shall therefore maintain the highest standard of environmental stewardship possible.

We have identified a number of the settlement properties as an opportunity to purchase and invest in, to look at the investment of progressive bonds, term deposits and a shares portfolio, which are consistent with our Kaupapa principals that will allow us to grow our putea so that it is intergenerational. Our key guideline is to grow the putea to \$80 million by a 20 year timeframe.

Recommendations have been presented to the Trust Board proposing variations to the structures that will ensure the entities will be tax efficient while still meeting all legislative requirements for our fisheries assets.

The main business of the company has still been the overall management and day to day mahi of our fisheries assets.

Final allocation of the Fisheries Settlement Assets into Te Hoiere Holding Company Ltd has meant we are now on equal ground with other quota holding companies with our ACE (Allowable Catch Entitlement) being allocated at the start of the fishing season and not, as has been in previous years, delayed due to the TOKM process.

Ngāti Kuia, with Ngāti Apa and Te Atiawa over five years have fostered a commercial working relationship in joint trading of our ACE. Ngāti Koata and Ngāti Tama have joined our Iwi Collective with a view of cementing the relationship over future seasons. The inclusion of all the Iwi packages has allowed us to maximise on the economy of scale and returned an increase of 3.26% for our ACE fish assets.

With the collation of the collective Iwi we have also managed to get representatives on a number of industry boards. At present the collective has representative on the Deepwater Fishing Group, Aquaculture New Zealand, Pauamac⁷, two members on the National negotiating team for New Space Aquaculture Māori Settlement and six members on the Te Tau Ihu Aquaculture project team for new aquaculture waterspace.

Discussions have also taken place with Ngai Tahu and major industry players so that we can look at opportunities that will be beneficial in other aspects of the fishing industry. This allows us to become more than just ACE traders and be involved in the value added process of the fishing industry, which can create job opportunities and future benefits.

The New Space Aquaculture Māori Settlement Act, when finalised, will also offer Ngāti Kuia the opportunity to be more integrated into the industry and allow us to achieve our aspirations in aquaculture development. We need to ensure that we are delivered unencumbered viable waterspace to achieve this.

Next year we hope to be operating under our new structures, to go forward and implement our SIPO and continue our planning for the future.

2014 will also create another special occasion when our Operations Manager and Trust Financial Manager Nicki, achieves a major milestone with 20 year service to our Iwi. Nicki started out with the Companies and her skills and expertise have been utilised by all entities of Ngāti Kuia. She has always represented Ngāti Kuia in a totally professional way in all aspects of her job.

We look forward to moving on the pathway to implement the SIPO and working towards achieving our milestone for the Iwi.

Sharyn Smith and Nicki Hemi

On behalf of the Directors.

Our Strategic Aims

- Profitable returns on settlement assets
- Asset Viability
- To ensure Assets reflect the uniqueness of Ngāti Kuia place in Te Tau Ihu
- Strong organisation

This work stream is led by;

Ngāti Kuia Holding Company	Sharyn Smith, Director Chris Royds, Director John Henderson, Director
Te Hoiere Holding Company	Lewis Wilson, Director
Manager	Nicki Hemi, Operations Manager

And supported in the Rūnanga by

- Board of Trustees

How this work stream improves outcomes for Ngāti Kuia

Our Companies Strategic Direction	Process : How we do it
Maximise returns on Fishing Assets	Administers collective Iwi quota broking service.
Building relationships with Industry	Through participation with Stakeholder Groups, Joint Ventures with Fishing & Marine Farming Companies and Ministry.
Maximise & Safeguard Iwi Assets.	Utilise and seek expertise which will be beneficial for the appropriate Asset.
Manage and Realise Assets	Utilise advice, develop added value process and benefits for Iwi Assets
Appropriate Commercial Policies	Developing Policy strategies to maximise the most of Iwi Assets
Provide Dividends	Funding the Trust
Increase Assets	On-going Industry networking to obtain / purchase new incoming earning Assets

Ngāti Kuia Holding Company Ltd 2012 to 2013

- February 2013 revised Statement of Investment Policy and Objectives (SIPO) has been presented and approved by the Board of Trustees of Te Rūnanga O Ngāti Kuia Trust for Te Hoiere Asset Holding Company Ltd in anticipation for management of the Settlement Funds.
- Returns from ACE Trading increased by 3.26% from the 2012 Gross Returns. In October 2012 Ngāti Tama and Ngāti Koata joined the Joint Venture collective with their wetfish packages.
- ACE Trading Service Fees increased by 73% with a better return from the October round and the inclusion of two further Iwi being charged.
- Utilised independent Iwi commercial fishers for customary purposes.
- Presently working with Tasman Forestry to look at opportunities with Te Hora Pa Road forestry block.
- Assets are currently being re-valued to be reflected in final 2013 Annual Audited Accounts.
- No new Assets have been purchased this year

Te Hoiere Holding Co Ltd 2012 to 2013

- Aotearoa Fisheries Ltd released a bonus share December 2012 to release Māori Authority Credits held under the organisation.
 - The Gross Dividend Paid (book entry no monies received) was \$255,085.71 with \$44,640.00 Māori Authority Credits attached. This represents a doubling of our holdings under Aotearoa Fisheries Ltd from 186 shares to 372 shares.
 - The Dividend that was paid out against the original shareholding of 186 shares for the September 2012 year end was Gross Dividend \$12,620.76 with Māori Authority Credits deducted of \$2461.05.
 - Represented in the Annual Accounts is the Gross total of \$267,706
- Assets are currently being re-valued to be reflected in final 2013 Annual Audited Accounts.
- No sale of Settlement Quota Shares has been made this year.

Activities	2011/2012
Support persons and organisations delivering services to our people	On-going
Representation on Industry Boards, committees and panels for Ngāti Kuia	On-going
Identify, train and support Ngāti Kuia people to do the work	On-going
Improve financial and commercial performance of Trust and Company	On-going
Review Companies and Directors performance	On-going

Assets	Held and Managed By	Comments
Forestry Te Hora Pa Road	Ngāti Kuia Holding Company	Long Term Investment Forestry Matures in 2018 which should then provide a return.
Quota Shares - Scallop 7 (2,848,472 Shares) - Hake 7 (74,336 Shares) - Goeduc 7 (2,666,667 Shares)	Ngāti Kuia Holding Company	Medium Term Investment Current source of Income for Trust
Marine Farms - Brightlands Bay 1.79 Hectares - Kenepuru Sounds 2.7 Hectares - Nydia Bay 0.4 Hectares - Tawhitinui Reach 0.887 Hectares - Wet Inlet 2.050 Hectares - Beatrix Bay 1 Line Utilised	Ngāti Kuia Holding Company	Medium / Long Term Investment Source of Income after Development Costs
Lic 290 Ltd	Ngāti Kuia Holding Company	Medium / Long Term Investment Source of Income.
Vehicle Escudo 4WD Vehicle	Ngāti Kuia Holding Company	Short Term Investment. Administered by TRONKCT

Assets	Held and Managed By	Comments
Aotearoa Fisheries Ltd Shares (AFL) (Increased for 186 shares to 372 Shares Dec 2012)	Te Hoiere Holdings Ltd	Medium Term Investment Dividend received yearly (projection of no dividend being received for the 2013 year)
Quota Shares (See Below for details)	Te Hoiere Holding Ltd	Long Term Investment governed by legislation from Māori Fisheries Act and MIO requirements. Main source of Income for Companies

Statement of Commercial Policies

<p><u>Dividends</u> Ngāti Kuia Holding Co Ltd ACE Trading / Fishing 7% Contingency Fund 93% Net Return to Te Hoiere Holding Co 2/3 Net Return to be held for Investment 1/3 Net Return to the Trust Marine Farming 100% Held for Marine Farm Development</p>	<p>Net Return Percentage to Te Hoiere Holding Company based on Income Returned from ACE Trading.</p>
<p><u>Dividends</u> Te Hoiere Holding Co Ltd ACE Trading / Fishing 7% Contingency Fund 2/3 Net Return to be held for Investment 1/3 Net Return to the Trust</p>	<p>Net Return The non-cash dividend from AFL was deducted prior to the return percentage returned to TRONKCT</p>

Review of results from 2013 Annual Accounts

BALANCE SHEET - RESULT	EXPLANATION
Net Asset Increase from 2012 to 2013 9% increase	Major increase was the Bonus Share Issue from Aotearoa Fisheries Ltd taking shareholding from \$680,388 to \$890,834, with the Māori Authority Credits that were attached under Taxation Refund Due of \$44,640.
Net Return on Assets for 2013 8% return	This is based on the Net Profit as a percentage of the average total assets over 2012 and 2013
Short / medium term debt paying ability 8.52 : 1	For every dollar of debt we currently hold we are able to pay this back over eight times. This shows a liquid asset base.
Asset Valuation	All assets are currently being re-valued to reflect the true market value in the 2013 Annual Accounts.
INCOME STATEMENT -RESULT	EXPLANATION
Trading Surplus from Marine Farming 88% return on income	For this year no marine farms were harvested due to poor growth rates. The returns from Marine Farming were the Water space lease. 2013 is the last year for the lease agreement. We received a share of profit from the Beal Partnership farm.
Trading Surplus from ACE Trading 21% return on income	During the 2013 year we had two additional Iwi groups join our Joint Venture partnership; Ngāti Tama and Ngāti Koata. This increased our package which resulted in a better return over the board. This is also reflected in the Trading Service fee with the inclusion of the two Iwi. The Levies and Permit costs include all expense relating to the ownership of the Quota Shares and is the first year we have had full cost come direct to the companies and not via Te Ohu Kai Moana.

NGĀTI KUIA HOLDING AND TE HOIERE HOLDING COMPANIES
BALANCE SHEET
AS AT 31 MARCH 2013

	2013	2012
EQUITY		
Paid In Capital	100	100
Retained Earnings	-321,855	-751,755
Ngāti Kuia Trust - Shareholders Advance	1,774,134	1,774,134
Marine Farm Revaluation Reserve	514,372	514,372
Land & Buildings Revaluation Reserve	205,728	205,728
Revaluation of Investments	196,788	196,788
Settlement of Fisheries Assets	2,530,474	2,530,474
	4,899,742	4,469,841
CURRENT LIABILITIES		
Accounts Payable	128,361	129,655
	128,361	129,655
NON CURRENT LIABILITIES		
Kaikaiawaro Fishing Company Limited	428,557	395,276
TOTAL EQUITY & LIABILITIES	5,456,660	4,994,773
CURRENT ASSETS		
ASB Bank Cheque Account	4,718	30,528
ASB Bank Call Account	833,826	603,277
Licence 290 Limited (JV Marine Farm)	159,298	164,638
Accounts Receivable	36,590	22,489
Advance - Te Hoiera Asset Holding Co	2,054	2,054
Taxation Refund Due	57,168	15,708
	1,093,654	838,695
NON CURRENT ASSETS		
Property, Plant and Equipment		
As per Schedule (at Book Value)	858,007	861,525
Investments		
Plantation Trees - Te Hora Pa Road	38,000	38,000
Scallop & Hake Quota Holding	1,478,651	1,478,651
Goeduc Quota Shares (2,666,667 Shares)	61,600	61,600
Impairment to Scallop & Hake Quota	-908,312	-908,312
Aotearoa Fisheries Ltd - Shares	890,834	680,388
Deepwater Quota Package	330,978	330,978
Final Fisheries Settlement	1,613,248	1,613,248
	4,363,006	4,156,078
TOTAL ASSETS	5,456,660	4,994,773

NGĀTI KUJA HOLDING AND TE HOIERE HOLDING COMPANIES
INCOME STATEMENT
FOR THE YEAR ENDED 31 MARCH 2013

<i>Marine Farming INCOME</i>	2013	2012
Mussel Sales	0	24,369
Water Space Lease Received	22,550	22,550
Profit/(Loss) Lic 290 Limited (JV Marine Farm)	7,112	7,958
Beal Partnership - Profit Share	27,644	0
	<hr/> 57,306	<hr/> 54,877
<i>COST OF SALES</i>		
Consultancy Fees	0	1,358
Seeding	0	14,509
Harvesting Costs	0	4,024
Licences & Permits	6,146	6,444
Repairs & Maintenance	538	364
<i>Cost of Sales</i>	<hr/> 6,683	<hr/> 26,700
TRADING SURPLUS	<hr/> 50,622	<hr/> 28,178
<i>Fishing & Quota Lease INCOME</i>		
Quota Revenue Received	765	968
Joint Iwi ACE Trading	1,160,796	871,338
ACE Trading Service Fee	6,172	3,570
	<hr/> 1,167,733	<hr/> 875,876
<i>COST OF SALES</i>		
Other Iwi Share of Joint Trading	894,135	611,463
Quota Lease Costs	0	7,610
Licences & Permits	30,612	17,281
<i>Cost of Sales</i>	<hr/> 924,747	<hr/> 636,354
TRADING SURPLUS	<hr/> 242,986	<hr/> 239,522
INCOME		
Net Surplus from Marine Farming	50,622	28,178
Net Surplus from Fishing & Quota Lease	242,986	239,522
	<hr/> 293,608	<hr/> 267,699
INVESTMENT AND OTHER INCOME		
Dividend Received	267,706	16,824
Interest Received	21,902	14,482
Asset Leasing Received	0	4,288
	<hr/> 289,608	<hr/> 35,594
Total Income	<hr/> 583,217	<hr/> 303,293

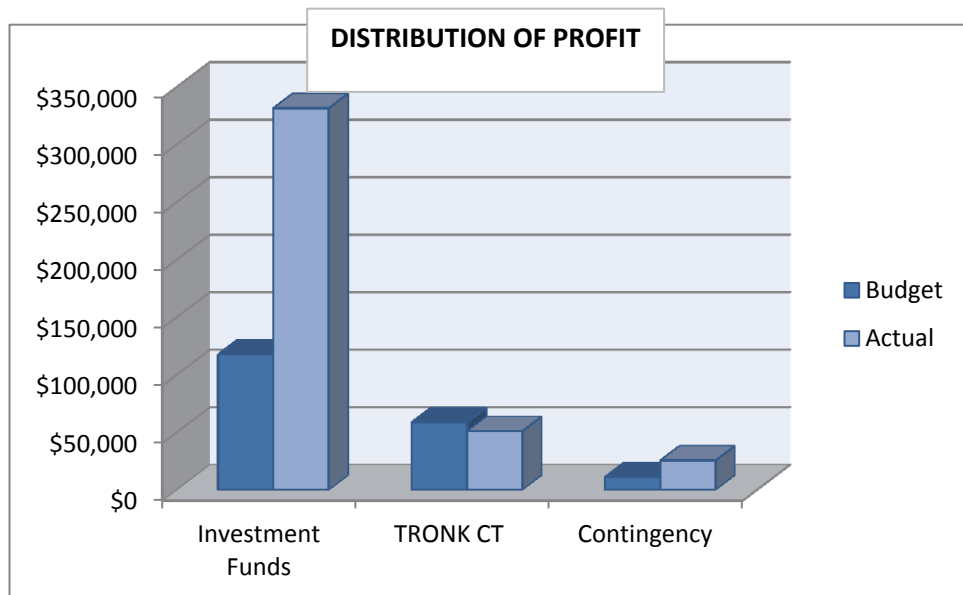
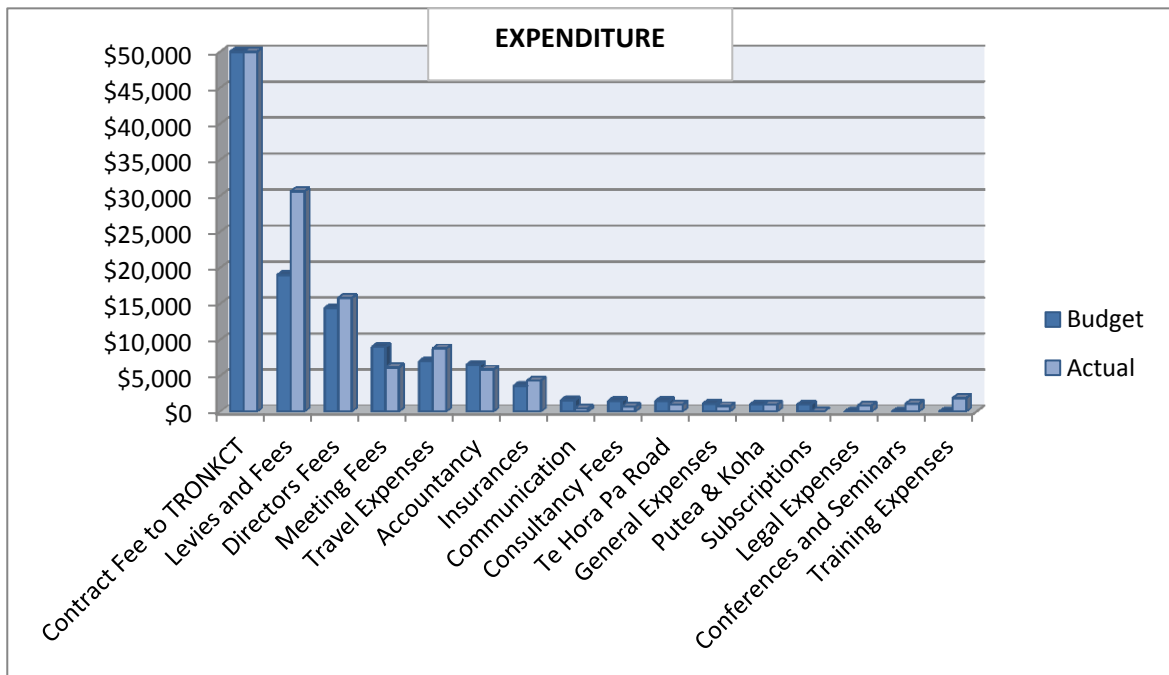
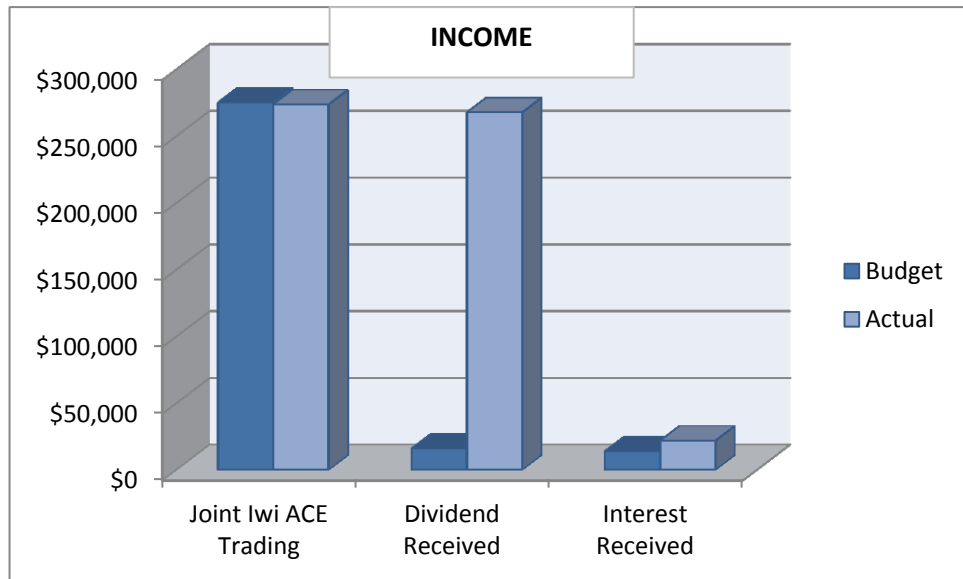
NGĀTI KUIA HOLDING AND TE HOIERE HOLDING COMPANIES
INCOME STATEMENT
FOR THE YEAR ENDED 31 MARCH 2013

	2013	2012
LESS EXPENSES		
Contract Work	50,000	50,000
Meeting Fees	6,150	6,600
Repairs and Maintenance		
Te Hora Pa Road	217	0
Small Asset Purchase	0	453
Standing Charges		
Insurance	4,324	3,949
Rates	773	727
Interest	13	33
Administration Expenses		
Management & Accountancy	5,852	5,218
ACC Levies	0	21
Consultancy Fees	704	435
Payments to Shareholder	51,076	54,564
Directors Fees	15,800	7,200
General Expenses	546	1,406
Legal Expenses	870	0
Trade Subscriptions	29	1,139
Postage and Stationery	223	0
Telephone & Facsimile	467	1,536
Training Expenses	1,896	0
Conferences and Seminar Expenses	1,097	0
Travelling Expenses	8,778	7,440
Putea and Koha Payments	983	783
TOTAL CASH EXPENSES	149,798	141,503
NET CASH SURPLUS (DEFICIT)	433,418	161,790
Depreciation	3,518	2,777
NET SURPLUS (DEFICIT) TRANSFERRED TO EQUITY	429,900	159,013

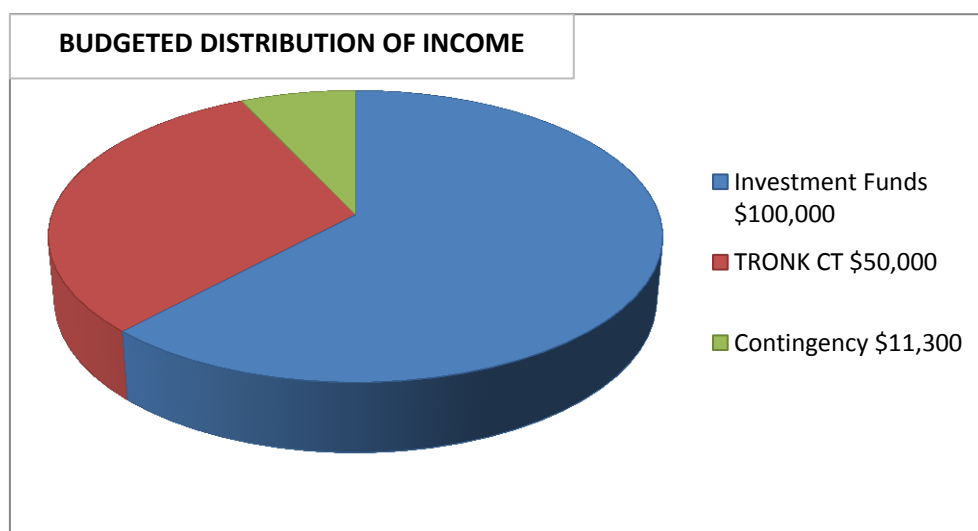
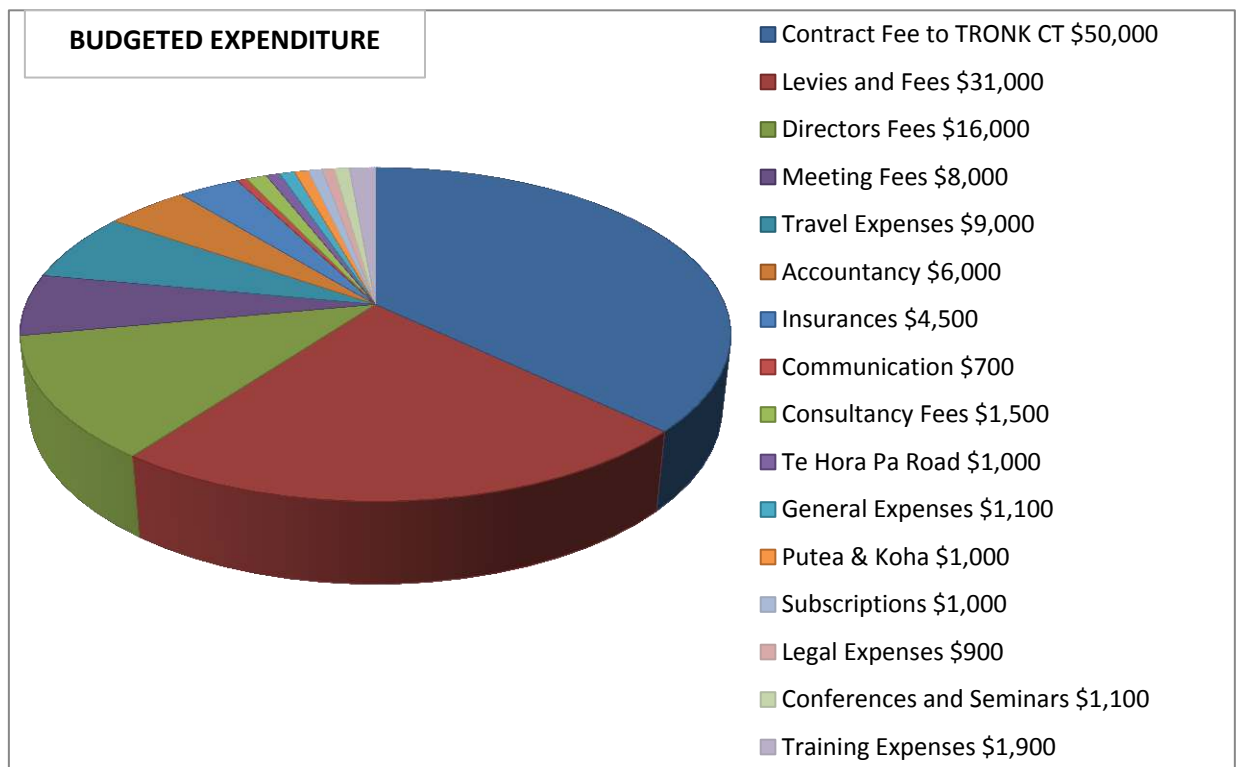
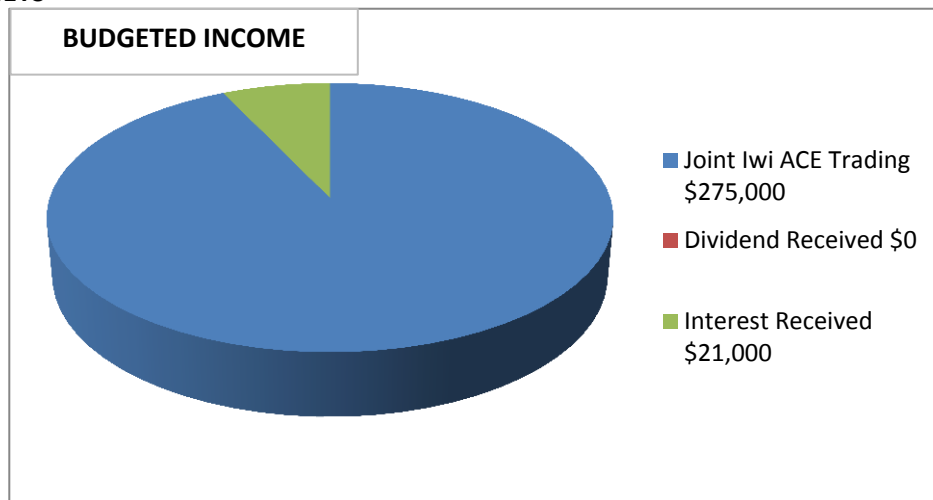
NGĀTI KUIA HOLDING AND TE HOIERE HOLDING COMPANIES
Schedule of Property, Plant and
Equipment
For the Year Ended 31 March 2013

	Orig Cost	Open W.D.V	Dep Method		YTD Dep	Accum Depn	Close W.D.V
Land & Buildings - 95 Te Hora Pa Road							
Garage Building	29100	18485	4.4	D	813	11428	17672
Other Buildings	4800	3049	4.4	D	134	1885	2915
Layout & Power	11640	4254	9.5	D	404	7790	3850
Water Supply	2910	1064	9.5	D	101	1947	963
Land (17.4430ha)	240000	240000					240000
Improvements Revaluation	48178	48178					48178
	336628	315030			1453	23051	313577
Motor Vehicles - at Cost							
Suzuki Escudo 4WD	13332	2560	30.0	D	768	11540	1792
	13332	2560			768	11540	1792
Office Furniture & Equipment - at Cost							
Office Shelving	1988	1955	10.0	D	196	229	1760
Desktop Computers (2)	2299	2203	50.0	D	1102	1198	1102
	4287	4158			1297	1426	2861
Marine Farms							
Kenepuru Sounds (1.4 ha)	84399	84399					84399
Tawhitinui Reach (0.887 ha)	72681	72681					72681
Wet Inlet (2.05 ha)	151188	151188					151188
Kenepuru Ext (1.3 ha) - Valuation @ 1/3/2010	68670	68670					68670
Nydia Bay (0,4 ha) - Valuation @ 03/01/2010	31969	31969					31969
Brightlands Bay (1.79 ha) - Valuation @ 1/3/2010	128144	128144					128144
Beatrix Bay (Lines Only) Valuation 01/3/2010	2727	2727					2726
	539777	539777					539777
	894024	861525			3518	36017	858007

2013 RESULTS AGAINST BUDGET



2014 BUDGETS



TE HOIERE HOLDING COMPANY LTD – QUOTA SHARES

STOCK	SHARES	STOCK	SHARES	STOCK	SHARES	STOCK	SHARES	STOCK	SHARES
ANC4	7456	GSC1	288550	ORH2B	13862	SCC4	7456	WWA8	27961
ANC7	1113125	GSC6A	37282	ORH3A	62148	SCC6	37282	WWA9	27961
BAR4	3230	GSC6B	37282	ORH3B	8708	SCC7A	1606503	YEM4	7456
BAR7	289928	GSH4	27438	ORH7A	238449	SCC7B	2494036	YEM6	37282
BCO4	152	GSH5	27961	ORH7B	13981	SCH4	3745	YEM7	2149121
BCO7	567658	GSH6	37272	OYS7	2500000	SCH7	497003	YFN1	37282
BIG1	37282	GSH7	306242	OYS7A	216093	SCI1	27961		
BNS3	7755	GSH8	27961	OYS7B	2500000	SCI2	27961		
BNS7	153122	GSH9	27961	OYS7C	1071310	SCI3	27961		
BNS8	10485	GSP1	43459	PAD6	37282	SCI4A	18641		
BUT6	37282	GSP5	27961	PAD7	1141334	SCI5	27961		
BUT7	1497928	GSP7	162739	PAR2	277865	SCI6A	37282		
BW51	37282	GUR7	554221	PAU7	1076067	SCI6B	37282		
BYA7	1113125	HAK1	13718	PDO4	7456	SCI7	306242		
BYX3	10963	HAK4	11855	PDO7	1113125	SCI8	27961		
BYX7	102715	HAK7	153122	PHC1	103617	SCI9	27961		
BYXB	13981	HOK1	38860	PIL4	7456	SKI7	408940		
CDL1	27961	HOR6	37282	PIL7	1113125	SNA7	519216		
CDL2	27961	HOR7	1113125	POR3	442825	SPD4	8733		
CDL3	27961	HPB4	4888	POS1	37282	SPD7	1121245		
CDL4	19532	HPB7	556562	PPI7	1113125	SPE4	30772		
CDL5	27961	IDO7	556562	PRK1	27961	SPE5	27961		
CDL6	37282	JMA3	27680	PRK2	27961	SPE6	37150		
CDL7	306242	JMA7	95563	PRK3	27961	SPE7	562912		
CDL8	27961	KAH3	443514	PRK4A	18641	SPE8	27961		
CDL9	27961	KIC1	27961	PRK5	27961	SPE9	27961		
CHC1	27961	KIC2	27961	PRK6A	37282	SPO7	530634		
CHC2	27961	KIC3	27961	PRK6B	37282	SPR4	7456		
CHC3	27961	KIC4	22369	PRK7	306242	SPR7	1113125		
CHC4	22369	KIC5	27961	PRK8	27961	SQU1J	103533		
CHC5	27961	KIC6	37282	PRK9	27961	SQU1T	39769		
CHC6	37282	KIC7	306242	PTO1	79769	SQU6T	18641		
CHC7	306242	KIC8	27961	PZL7	1113125	SSK1	27961		
CHC8	27961	KIC9	27961	RBM1	37282	SSK3	22208		
CHC9	27961	KIN4	3542	RBT7	592989	SSK7	317639		
COC7A	2500000	KIN7	1153809	RBY4	9571	SSK8	2679		
COC7B	1814301	KWH6	37282	RBY6	37282	STA4	11664		
COC7C	318236	KWH7A	2121746	RBY7	1113125	STA7	556562		
CRA5	535555	KWH7B	216340	RCO7	557552	STN1	37282		
CRA9	99576	LDO1	100099	RIB1	27961	SUR7A	2244393		
DAN7	1113125	LDO3	21805	RIB2	27950	SWA1	48160		
DSU7	1113125	LEA2	555237	RIB3	27961	SWA3	12859		
ELE7	597476	LEA4	7456	RIB4	31348	SWA4	13568		
EMA7	592962	LIN4	13318	RIB5	27961	SWO1	37282		
FLA7	561851	LIN5	12372	RIB6	37274	TAR4	721		
FRO1	27961	LIN6	18639	RIB7	306242	TAR7	555852		
FRO2	27961	LIN7	85490	RIB8	27961	TOR1	37282		
FRO3	27961	MAK1	37282	RIB9	27961	TRE7	285988		
FRO4	31758	MDI7	1113125	RSK7	1113125	TRU4	7857		
FRO5	27961	MMI7	1113125	RSN2	24466	TRU6	37282		
FRO6	37282	MOK1	143342	SAE7	1113125	TRU7	1113125		
FRO7	306242	MOK4	13688	SBW1	79148	TUA7	1113125		
FRO8	27961	MOO1	37282	SBW6A	37282	WAR7	556551		
FRO9	27961	OE01	38783	SBW6B	37282	WWA1	27961		
GAR4	7456	OE03A	40469	SBW6I	37282	WWA2	27961		
GAR7	2277871	OE04	10151	SBW6R	37282	WWA3	27961		
GLM7A	2121746	OE06	18627	SCA7A	216093	WWA4	24798		
GLM7B	216340	ORH1	13981	SCA7B	2500000	WWA5B	29706		
GMU7	556562	ORH2A	13981	SCA7C	1071310	WWA7	306242		