

Ngāti Kuia Maranga Mai

June 2020 | Issue 08

VALUES | POU

Ngāti Kuitanga – Identity

He Tāngata – People

Te Taiao – Environment

Te Pūtea – Assets



MIHI KI NGĀ MATE

POU: HE TĀNGATA | NGĀTI KUIATANGA
HUATAKI WHAREAITU

Kei ngā ika o te mate
I hinga atu ai i te wā a te Mate Urutā
Nāna a tātou tikanga i rāhuitia
Tē taea te tangihia e tika ana i a koutou
Moe mai rā koutou

Ki a koe Kereopa te manawa whenua o te Kī
Ka pīoioi e, tohu aroha hau kāinga mōu
E hau ana tō rongo toa ki te tahatū o te rangi
Whai mai i a koe ko Tangata Hangareka
a Tommy Whai Poaka

Ināia, mā wai rā e taurima ngā hiwi ngau poaka
Kātahi ka tau ki wahine rerehua e whaea Isobel
Māu e kauria Te Moana o Raukawakawa
I ngā wai o Whekenui a Hinepoupou
Whakakukū ki Meretoto te kāinga i
tūtakitaki i a Tūpaia

Uiui noa mai! He aha rā tēnei mahi pōhau noa
Tērā pea! Ko te heke rā o Maruiwi,
tōremi ai ki te Reinga
Kei a koutou Te tai o te Pō, mā mātou
koutou e whai, mā Te tai o te Ata
Haere, haere, haere atu rā koutou

CHAIRPERSON'S KŌRERO

POU: NGĀTI KUIATANGA

Tēnā koutou e te whānau

Covid-19 has certainly bought us into a strange and challenging world. So, it's really important that iwi remain united and support one another through the recovery period and beyond.

It is also important that we continue to do the right thing and appreciate the combined mahi being provided for our whānau. On reflection, it is great that together we're doing things for ourselves and contributing to the mahi at the highest level.

Kia kaha, he waka eke noa!

**Nāku noa, nā
Waihaere Mason
MNZM**



Above: Waihaere Mason.



Above: Weaving by Hamuera Robb.



Above: Kereopa Ratapu, Tom Wilson & Helena Isobel Smith.

COVID-19 REFLECTION

POU: NGĀTI KUIATANGA | HE TĀNGATA
DAVE JOHNSTON

During the Covid-19 lockdown our GM, Dave Johnston was interviewed by Intepeople. Here is snippet of what was discussed. You can find the complete article on the Ngāti Kuia Facebook page.

Leading through Covid-19

As leaders, the COVID-19 crisis has presented us all with unexpected challenges. Facing these unprecedented circumstances head-on has led to many stories of great leadership across all industries and sectors in Nelson, Tasman, and Marlborough.

“He waka eke noa” (We are all in this together)

Tēnā rā tātou katoa.
E ngā hau e whā, e ngā maunga me ngā waka o te rohe nei, tēnei te mihi.
Ki a rātou kua whetūrangitia. Haere, haere atu rā.
Rātou ki a rātou, tātou ki a tātou
Tihei mauriora.

How has Covid-19 affected your organisation overall?

While Covid-19 continues to pose a challenge both domestically and internationally, the virus has also **brought our communities and organisations closer together.**

Relationships across Iwi, as businesses, government and the community are perhaps stronger right now, than ever before. I believe this is a **defining point of time** for not only our organisation or sector but also for our region, our nation and our world.

As a leader, what has been key during this time?

Genuineness within leadership and clear communication have been paramount during this time of increased anxiety and uncertainty. There has been no time for division, wearing of hats, egos or politics. Our focus has been on working with other groups and organisations to help whānau, especially those who are most vulnerable.

Any learnings or advice you can pass on to other leaders?

One key learning that’s become even more apparent to me during this period is, **“Mahia te mahi nei.”** If there is something that needs to be done, we must do it promptly and with the end in mind.

Have you been able to identify any opportunities for your organisation as a result?

“Ka mate kāinga tahi, ka ora kāinga rua.” **When one house falls, another shall rise.** There will be good that arises from this adversity, and when it does, do not be afraid to leave things that do not work as well in the past.

Any thoughts on what will change for your organisation as a result of this disruptor?

We are using technology more than ever and have shown that our Business Continuity Plan (BCP) works. We have also developed new relationships that will be long-lasting and will hopefully provide new partnerships that will help us navigate through the testing times ahead and help us to be stronger for it into the future.

Covid-19 will continue to weigh upon all of us. To prosper we must remember this: **a weight shared is less to bear.**



Above: Dave Johnston.



Above: Billy Wilson, Lea Hemi and Ngaire Kingi.

It was a time for us all to connect, engage and communicate with one another. It helped us so much when whānau were in contact with us too. Over the coming months it will still be essential for all whānau to be updating their contact details. If you don't get through to us straight away leave us a message with your name, concern and best contact channel so we can ensure we can get back to you.

We are pleased that we have an opportunity to strengthen manaaki-ā-iwi in Te Taihū through the provision of a new whānau ora navigator role specifically to support the eight Iwi collaboration in our ongoing response to Covid-19. This role is for 12 months and will be based from our Ngāti Kuia Whakatū office.

When our new staff member is onboard, we will let everyone know through our social media channels. So, e te whānau now the offices are open please come in and visit or get in touch via phone, email or social media.



TE KURA ORA FUND

POU: PŪTEA | HE TĀNGATA
TE KURA ORA COMMITTEE

Te Kura Ora | The Living Feathers: Adorning our people so that they may fly

E te whānau whanui o Kurahaupō

Ko te mākohā a mihi aroha, e hora nei ki a koutou, tēnā koutou katoa e te tini o Kurahaupō ki Te Taihū Ihu o te Waka ā Māui. Nā Te Kura Ora tēnei i whakamaru, i taituarā, i haumi hoki rā.

On Wednesday 17 June, the Kurahaupō iwi of Te Taihū launched a new orange fund to support whānau experiencing hardship because of Covid-19, and that require one-off financial support.

For more information and for an application form visit our website or call 0800 642 845.



COVID-19 MANAAKI NAVIGATORS

POU: NGĀTI KUIATANGA | HE TĀNGATA
CHALLEN WILSON

Manaaki mō Tātou Katoa

Over the last few months, it has been no ordinary time for anyone. With the lockdown that began on Wednesday 25 March 2020, we all took steps to look after our whānau and selves.

A big mihi goes out to all of our team at Te Rūnanga o Ngāti Kuia and especially Lea, Ngaire and Billy, who have stepped up to be our Manaaki Navigators. Through support from the [#Manaaki20](#) initiative, they were on a mission to call as many whānau as possible (and there are over 4000 whānau on our database), starting with our kaumātua. The team worked tirelessly to ensure people were coping and to lend pathways to support as needed.

POU: NGĀTI KUIATANGA

NGĀTI KUIA WEEKEND NOTICE

**DUE TO THE
CONTINUING UNCERTAINTY
OF COVID-19**

**AND THE TRAVEL
RESTRICTIONS THAT IT
HAS CREATED,**

**WE HAVE MOVED NGĀTI
KUIA WEEKEND TO**

**WAITANGI WEEKEND 5-7
FEBRUARY 2021.**

MORE DETAILS WILL BE POSTED IN THE NEXT FEW MONTHS.



COVID-19 TTI COMMS

POU: NGATI KUIATANGA | HE TĀNGATA
CHALLEN WILSON

Kotahitanga mo ngā Iwi o Te Taihū

Since the week of the Covid-19 Level 4 lockdown much work occurred in the emergency management space for whānau to be looked after and feel supported. Kōkiri-ā-Iwi Rōpū (KAI), the Te Taihū iwi leads came together with other agencies, local and central government, and the Nelson-Tasman and Marlborough Civil Defence Management Group to ensure all communities were well looked after. What has been created out of KAI is a mechanism to bring all our iwi stories together and the ability to communicate as a collective whole.

A collection of stories were made over this time in our history that has brought us all together. To access these stories visit the Ngāti Kuia Youtube channel.

Please take some time to have a look at all this amazing mahi put in from whānau near and far to celebrate who we are, what's important to us, and how we 'win' at coming together with the intent of looking after each and every one of us!



MĀTAURANGA STRATEGY

POU: NGĀTI KUIATANGA | HE TĀNGATA
VANYA GEORGE

Our Tamariki are our Future

Our very own, Vanya George is sending the love through her knowledge in teaching. At different levels for Covid-19 (currently we are in level 1) we need to be able to adapt to the needs of our tamariki and whānau learning to learn together. Vanya shares her caring and wise words to support whānau in this space.

Covid-19 Alert Level 1

Schools should now be returning to a new normal. Schools are managing this differently, but with the common goal of helping tamariki and rangatahi adjust and reintegrate back into school life. Most importantly, if you our tamariki are feeling unwell, please keep them home.

Learn from Home Websites

With many tamariki and rangatahi returning to kōhanga reo, kura and wharekura, the broadcasting of Mauri Reo, Mauri Ora on Te Reo Channel (SkyTV 82) will end on Friday 19 June. Jemimah and I have really enjoyed watching some of the Māori programmes while we had our lunch. The learn from home websites are also regularly being updated with further resources for kaiako and whānau to support children's learning at home:

- <https://www.kauwhatareo.govt.nz/mi/resource/ki-te-ao-marama/>
- <https://learningfromhome.govt.nz/>

Mātauranga Strategy

The Ngāti Kuia Mātauranga Strategy is ready to be launched during Matariki and we are very excited to begin the roll out. Keep an eye out for the video launch shortly.



Above: Vanya George and tamaiti Jemimah.

HAUORA

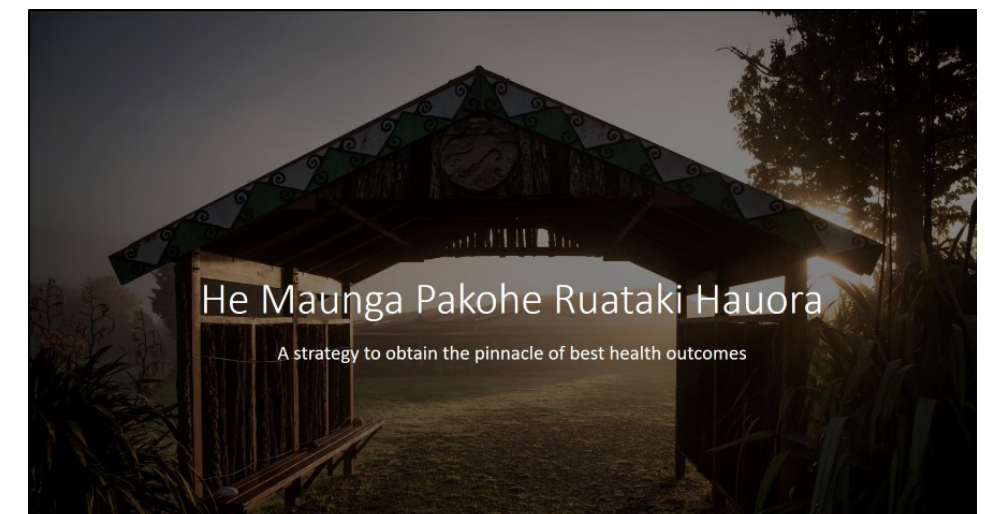
POU: NGĀTI KUIATANGA |
HE TĀNGATA
VICKY THORN

**Act in the Present and Preserve
our Future**

What a challenging time this has been for all. The hauora of our whānau is being tested. What is highlighted here is the unprecedented actions that have taken place and will continue to do so for many months and possibly years to come.

In the midst of this, we are seeing how our communities in Te Taihū are resilient, how a community can quickly come together and work together. A group presenting under the title of VTAG (Māori & Vulnerable Technical Agency Group) is working across the top of the south within a framework that is providing collated informational advice of what is happening at the coal face and what is needed for wellbeing and recovery.

We are lucky to have Rebecca Mason Trustee, involved with Rōpū-Kōkiri-ā-lwi and me, Vicky Thorn, Hauora project manager on the VTAG group. These groups provide a forum whereby Māori stakeholders connecting with the community raise issues



and opportunities in engaging models of care, meeting the immediate needs, and looking to the future of what we need to focus on. Ngāti Kuia has a seat at the table in all groups and is well connected.

Our community groups' responsiveness to this has seen a visual lens of what the real issue is out there, sharing ‘how we can help’ and support from industry partners to what a community needs to survive.

To all whānau our resilience and hauora will see us move forward with strength. The Hauora project team is currently reviewing material from interviews and working on the research report findings. We still have some mahi to do and look forward to connecting Kanohi-ki-te-Kanohi very soon.

TE TAIAO

POU: NGĀTI KUIATANGA | TE TAIAO
JULIA EASON

Our Sacred Sites

Back at the Road Show in 2018, we received feedback that our urupā needed more attention, particularly accessing some burials and maintenance of others. Alongside strong input from whānau, some key specialists and the Taiao team have been working to identify and map our urupā and work with other parties to improve maintenance and access for others.

Peter Meihana and Julia Eason visited the small ¼ acre urupā at Orakiawhaea in the banks of the Kaituna River. Anthony Patete was also able to provide extremely valuable information for this site. A few months later the sites at Pareuku and Oruapuputa were visited by Hamuera Robb, Peter Meihana, archaeologist Amanda Young and Julia. Since then all three sites have been protected through the Architect Archaeological database.



Above: Te Hora Urupā.

Three urupā were surveyed by another Archaeologist, Hans Deiter-Bader with field assistance from Hamuera Robb. These were Te Hora, Ruapaka, and again at Pareuku/Pokiki. These were very successful surveys using the latest non-invasive technology; high-resolution drone photography, Ground Penetrating Radar, and Geomagnetic sensors. The results were better than expected and a lot was learned. Since then, the urupā at Te Hora has been expanded, A meeting with NZTA/Waka Kotahi was held regarding Ruapaka and further discussions and investigations with Marlborough District Council and Rangitāne o Wairau over Pareuku/Pokiki.

Very early discussions for Ruapaka Cemetery and Mahikapoa Cemetery have been had but the field visits have been delayed due to the current travel restrictions. We will be pursuing this again as soon as we can. We are glad to be able to say that this work has been a real team effort and that we hope to have some real tangible improvement for whānau and protecting our wāhi tapu.

We wish to thank Hamuera Robb, Peter Meihana, Anthony Patete, and Amanda Young for all their time and expertise to date, Mark Moses for his enduring sharing of mātauranga, Huataki Whareaitu for his cultural protection of this work and, Peter Hemi, Lee Mason and Lewis Smith for their continued work on our sites of significance.

NGĀTI KUIA WĀHI TŪPUNA SERIES TWO

POU: NGĀTI KUIATANGA | TE TAIAO | HE TĀNGATA
MARK MOSES

Ki mai te tangata ki a koe – The Story of Tamanui and Hinerānuia

The Story of Tamanui and his sister Hinerānuia is remembered in the Ngāti Kuia waiata “Ki mai te tāngata ki a koe”[1] recorded from Eruera Wirihana in 1894 by S Percy Smith and Eldson Best. The first part of the story refers to Hine-Kauatata chasing Poutini. They went to Tuhua (Te Moana Tuhua) where you get Obsidian. She then chased Poutini to Rangitoto (Te Moana Uri) where you get argillite. Finally, Hine Kauatata went to Arahura, where you get Pounamu. These three types of stone were worked to make tools by our ancestors. Hine-Kauataata daughter of Hine tua hoanga is the personification of grinding stone.

The second part of the waiata refers to the story of Tamanui, Hinerānuia and Tumuaki. Tamanui went with the Kurahaupō waka to Mawheranui (Greymouth) where he disembarked. He went looking for Te Ika a Ngahue – the fish of Ngahue called Poutini. Tamanui sister Hinerānuia was kidnapped by his servant Tumuaki. Hinerānuia had discovered how to make food out of aruhe by beating it. Tamanui searched for them by finding the signs Hinerānuia had been there from beating aruhe. Tamanui followed their trail to the Arahura river. There Tamanui caught Tumuaki and turned him into the Maunga which now bears his name. Tamanui then caught Poutini who he tried to cook but dropped Poutini in the fire. Poutini shattered and the shards spread all over the place. That is why Pounamu has black spots in it. Like other older Te Waipounamu iwi, we all have our own versions of the discovery of Pounamu. The Pounamu Mania is made from local pounamu by Ngāti Kuia stone carver Lewis Smith.

<i>Ki mai te tāngata ki a koe</i>	<i>People say to you</i>
<i>Nā wai te moana te takoto nei</i>	<i>By whom is the sea that lies here</i>
<i>Nā Hine-kauataata</i>	<i>By Hinekauataata</i>
<i>Nāna i kau mai</i>	<i>She who swam</i>
<i>Te Moana Tuhua</i>	<i>The obsidian sea</i>
<i>Te Moana Uri e</i>	<i>The argillite sea</i>
<i>Whakataki au te haere</i>	<i>I trace out the journey</i>
<i>Ka tau ano, ko Tumuaki</i>	<i>Settled there is Tumuaki</i>
<i>Ko Arahura</i>	<i>It was Arahura,</i>
<i>Ko Hine-rānuia anake</i>	<i>It was Hine-rānuia only</i>
<i>Nāna i patu ake ki te aruhe</i>	<i>She whom pounded the fernroot</i>
<i>Waiho te tohu ki te whenua</i>	<i>Leaving the marks on the land</i>
<i>Ko Tamanui</i>	<i>For Tamanui</i>

Above: [1] EW Manuscript, Wai 28.



Above: Te Pounamu Mania carving by Lewis Smith.

HIGHLIGHTS

POU: NGĀTI KUIATANGA
CHALLEN WILSON & LEA HEMI



From top to bottom, left to right: Whakatū Marae Waitangi Day Kai Fest 2020, Mātauranga Roopu, Whakatū Roadshow, Mark Moses, Kereopa Ratapu, Aunty Lovely, Aunty Celia Hawea, Skylah Breeze, Karen Starkey and tamariki, Duncan Wilson, Ngāti Kuia Waka at Tuia250, Te Ua Te Kotua & Hohaia Te Wera Te Kotua, TTe Rupe o Ruapaka depicted by Hamuera and used in a glass partition in the Nelson Office.

Ngāti Kuia Maranga Mai

Ngāti Kuia Office, 192 Rutherford Street, Nelson, PO Box 968, Nelson 7040.
Phone: 0800 NGATIKUIA (0800 642 845) | Email: tari@ngatikuia.iwi.nz